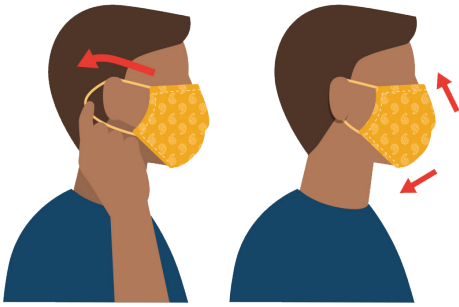
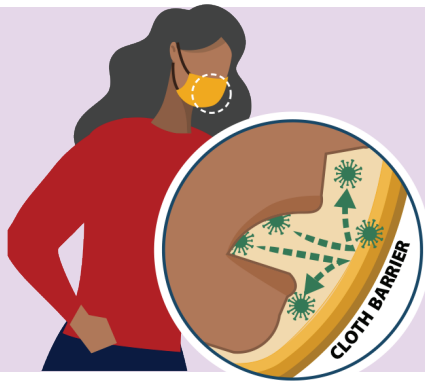


How to Safely Wear and Take Off a Cloth Face Covering



Wear Your Face Covering Correctly

- Wash your hands before putting on your face covering
- Put it over your nose and mouth and secure it under your chin
- Try to fit it snugly against the sides of your face
- Make sure you can breathe easily
- Do not place a mask on a child younger than 2



Use the Face Covering to Help Protect Others

- Wear a face covering to help protect others in case you're infected but don't have symptoms
- Keep the covering on your face the entire time you're in public
- Don't put the covering around your neck or up on your forehead
- Don't touch the face covering, and, if you do, clean your hands



Follow Everyday Healthy Habits

- Stay at least 6 feet away from others
- Avoid contact with people who are sick
- Wash your hands often, with soap and water, for at least 20 seconds each time
- Use hand sanitizer if soap and water are not available



Take Off Your Cloth Face Covering Carefully, When You're Home

- Untie the strings behind your head or stretch the ear loops
- Handle only by the ear loops or ties
- Fold outside corners together
- Place covering in the washing machine
- Wash your hands with soap and water

Cloth face coverings are not surgical masks or N-95 respirators, both of which should be saved for health care workers and other medical first responders.

For instructions on making a cloth face covering, see: [cdc.gov/coronavirus](https://www.cdc.gov/coronavirus)

For the latest updates and additional information on COVID-19, please visit [NRMHospital.org](https://www.nrmhospital.org).

Content Source:

